



Landscape structure is a key driver of soil protist diversity in meadows in the Swiss Alps

Christophe V. W. Sepey · Enrique Lara · Olivier Broennimann · Antoine Guisan · Lucie Malard · David Singer · Erika Yashiro · Bertrand Fournier

Received: 8 April 2022 / Accepted: 4 December 2022
© The Author(s) 2023

Abstract

Context Human-induced changes in landscape structure are among the main causes of biodiversity loss. Despite their important contribution to biodiversity and ecosystem functioning, microbes—and particularly protists—remain spatially understudied. Soil microbiota are most often driven by local soil properties, but the influence of the surrounding landscape is rarely assessed.

Supplementary Information The online version contains supplementary material available at <https://doi.org/10.1007/s10980-022-01572-z>.

C. V. W. Sepey (✉) · B. Fournier
Institute of Environmental Science and Geography,
University of Potsdam, Karl-Liebknecht-Strasse 24-25,
14476 Potsdam-Golm, Germany
e-mail: sepey@uni-potsdam.de

E. Lara
Department of Mycology, Real Jardín Botánico-CSIC,
Plaza de Murillo 2, 28014 Madrid, Spain

O. Broennimann · A. Guisan · L. Malard · E. Yashiro
Department of Ecology and Evolution, University
of Lausanne, Biophore, 1015 Lausanne, Switzerland

O. Broennimann · A. Guisan
Institute of Earth Surface Dynamics, University
of Lausanne, Géopolis, 1015 Lausanne, Switzerland

D. Singer
UMR CNRS 6112 LPG-BIAF, Angers University, 2
Boulevard Lavoisier, 49045 Angers, France

Objectives We assessed the effect of landscape structure on soil protist alpha and beta diversity in meadows in the western Swiss Alps.

Methods We sampled 178 plots along an elevation gradient representing a broad range of environmental conditions and land-use. We measured landscape structure around each plot at 5 successive spatial scales (i.e. neighbourhood windows of increasing radius, ranging from 100 to 2000 m around a plot). We investigated the changes of protist alpha and beta diversity as a function of landscape structure, local environmental conditions and geographic distance.

Results Landscape structures, especially percentage of meadows, forests, or open habitats, played a key role for protist alpha and beta diversity. The importance of landscape structure was comparable to that of environmental conditions and spatial variables, and increased with the size of the neighbourhood window considered.

Conclusions Our results suggest that dispersal from neighbouring habitats is a key driver of protist alpha and beta diversity which highlight the importance of landscape-scale assembly mechanisms for microbial diversity. Landscape structure emerges as a key driver of microbial communities which has profound implications for our understanding of the consequences of land-use change on soil microbial communities and their associated functions.

Keywords Land-use change · Landscape · Microbial ecology · Grassland · Soils

Introduction

With about 75% of the global land area being impacted by human activities (Ellis and Ramankutty 2008), land-use change is one of the main causes of terrestrial biodiversity loss (Sala et al. 2000; Cardinale et al. 2012; Mace et al. 2018; Brondizio et al. 2019). Land-use changes have modified landscape structure through destruction, degradation, and/or fragmentation of natural habitats with negative consequences on local biodiversity and the associated ecosystem functions and services (Brondizio et al. 2019). Anthropogenic modifications of landscape structure are likely to continue in the future to meet the increasing need of a growing human population (Tilman et al. 2011; Mace et al. 2018). In this context, understanding the impact of changes in landscape structure on ecosystems is required to maintain landscape biodiversity and services.

Microbes represent the dominant part of biodiversity on Earth (Locey and Lennon 2016). They are also central actors to key ecosystem functions and services including carbon sequestration (Shakoor et al. 2020), litter decomposition (Jackson et al. 2017), nutrient turnover (Wagg et al. 2014), food production (Nosheen et al. 2021), water quality supply (Sagova-Mareckova et al. 2021) or regulation of biological populations (Kibblewhite et al. 2008). However, despite their important contribution to biodiversity and ecosystem functions, microbes are rarely considered in spatial studies assessing the impact of environmental conditions on biodiversity (e.g. Seppely et al. 2020; Mod et al. 2020; 2021; Malard et al. 2022), and landscape structure is considered even less frequently (Mennicken et al. 2020; Mony et al. 2020). As a result, microbial assembly processes and, especially, the importance of landscape structure for local microbial diversity and functionality remains unclear. This is a major knowledge gap in microbial ecology as well as in our understanding of the consequences of land-use changes.

Studies analysing the drivers of microbial diversity have primarily focused on local processes assuming that microbial community composition results from the effect of the local abiotic environment and from biotic interactions (Louca et al. 2018; Yashiro et al. 2018; Mod et al. 2020; Malard et al. 2022). These studies have shown the importance of environmental conditions such as temperature (Fierer et al. 2006;

Mod et al. 2020), pH (Chu et al. 2010; Yashiro et al. 2016), and soil moisture (Sofi et al. 2016). Other studies have focused on biogeographical processes revealing patterns of microbial diversity (reviewed by Martiny et al. 2006), such as continental divide (Glaeser and Overmann 2004; Louca 2021), latitudinal gradient (Schwalbach and Fuhrman 2005), or distance-decay relationships (Hanson et al. 2019; Schwob et al. 2021). However, these studies have mostly ignored the impact of regional-scale processes on local community composition (Leibold et al. 2004; D'Amen et al. 2017). Because landscape structure modulates the strength and type of impact of regional processes on local communities (Fournier et al. 2017, 2020), modern landscape ecology approaches (e.g. Riitters 2019) have the potential to shed new light on the processes driving microbial community assembly, and particularly on the importance of dispersal from a regional pool of potential colonists.

Despite their potential, landscape ecology approaches applied to microbial communities remain scarce (Mony et al. 2020, 2022), mostly due to the difficulty to observe these organisms. Progress in DNA-based characterization of community composition now makes it easier to conduct landscape-scale surveys of microbial diversity (Kibblewhite et al. 2008). However, the few landscape ecology studies focusing on microbes are taxonomically and functionally biased towards parasitic organisms and pathogens, mostly fungi or bacteria (Mony et al. 2020; Cruz-Paredes et al. 2021). This line of research demonstrated the importance of landscape structures such as roads for the dispersal and distribution of pathogens (e.g. Holdenrieder et al. 2004; Laine and Hanski 2006; Bousset et al. 2018). Yet, to our knowledge, the effect of landscape structure on microbial alpha and beta diversity at large taxonomic scale (here, protists) has never been assessed. Because of the key functional importance of soil protists (Geisen, 2016; Seppely et al. 2017; Xiong et al. 2018), this gap limits our understanding of the consequences of land-use change on ecosystem structure and function.

The present study evaluates the effect of landscape structure on local soil protist alpha and beta diversity across 178 non-forested open vegetation plots (mostly meadows) in the western Swiss Alps. We assess the effect of descriptors of landscape composition (i.e. the relative proportion of land cover types in the landscape, regardless of spatial distribution)

and configuration (i.e. the spatial arrangement of land cover types in the landscape) on local microbial alpha and beta diversity and compare it to environmental and spatial descriptors. We hypothesise that the structure of the landscape around a focal plot influences alpha and beta protist diversity highlighting the importance of regional processes for local community assembly. We also expect that protist community dissimilarity (beta diversity) correlates positively with geographic distance (distance-decay relationship) and that landscape, environmental and spatial descriptors contribute to this correlation. In addition, we examine the importance of scale for landscape effects on protist diversity by explicitly analysing the effect of landscape descriptors calculated at 5 successive spatial scales (neighbourhood window from 100 to 2000 m

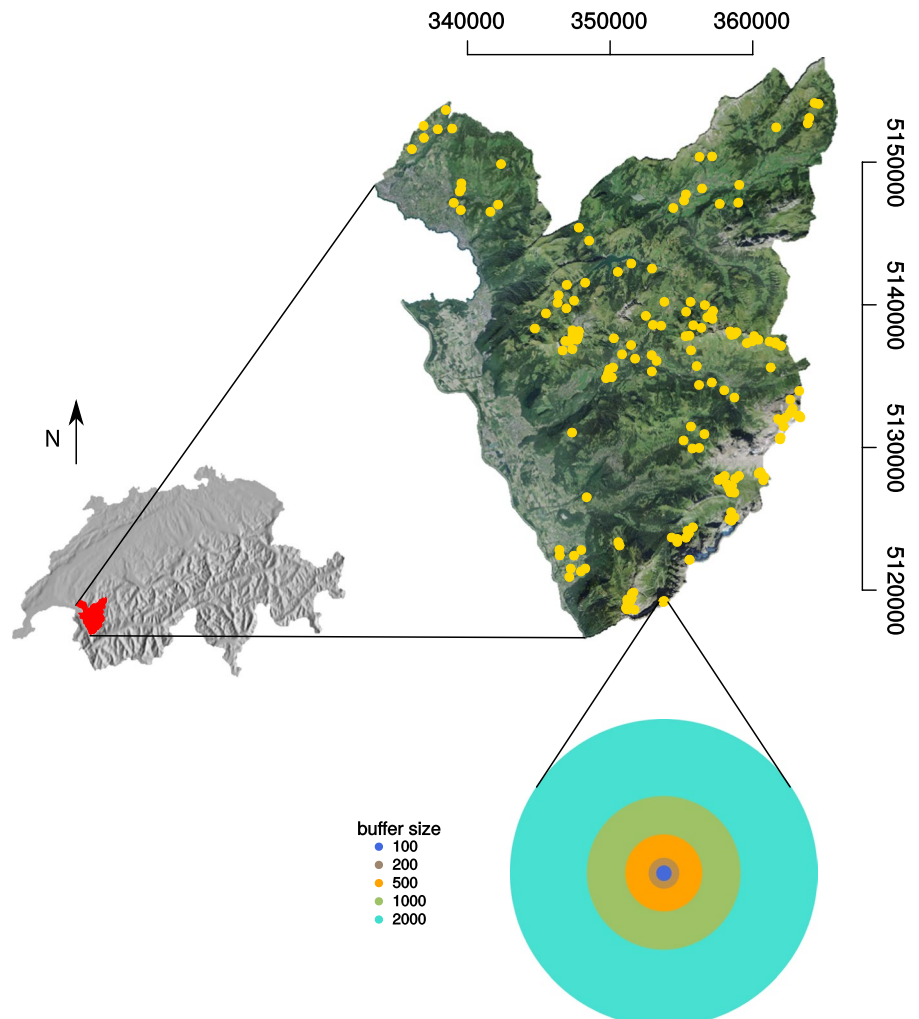
around a plot). If our analyses confirm our hypothesis, it would suggest that landscape-scale processes are key to understanding microbial community assembly and biodiversity patterns, as observed in larger-sized organisms (Betts et al. 2019; Martin et al. 2019).

Material and methods

Study site and sampling design

We focus primarily on alpine meadows in the western Swiss Alps (Fig. 1). As in most Western European mountain systems, meadows are threatened by both urbanisation and agricultural abandonment allowing forests to take over. As a result, the area occupied by

Fig. 1 Map of the western Swiss Alps study area with the 178 selected plots' locations (yellow dots). The lower panel shows the selected neighbourhood windows around each plot (100, 200, 500, 1000, 2000 m) used to calculate the different landscape metrics (see Table 1)



meadows is decreasing and remains are increasingly fragmented (Dengler et al. 2014). These changes in landscape structure impact plants (Dengler et al. 2014) and, expectedly, protist diversity, and are likely to increase in the future (Pellissier et al. 2013). For these reasons, alpine meadows in the study area constitute a useful model ecosystem to study the impact of landscape structure on soil microbial communities.

A total of 178 non-forest open vegetation plots (each of 2 m by 2 m) were sampled in the study area from July 4th to September 1st 2013 according to a sampling design stratified by altitude. For each sample, five soil cores of 100 g each were taken (from the four corners and centre of the plot, respectively, i.e. one 'sample'). The soil cores were then mixed and kept below 4 °C until further processing. For more details, see Yashiro et al. (2016) and Buri et al. (2020).

Environmental descriptors

For each sample, 33 edaphic descriptors were measured (Table S1). Relative humidity (rh) and soil organic carbon (LOI) have been measured gravimetrically. Percentages of sand, silt, and shale were measured by laser granulometry. Electroconductivity (EC) and pH were measured in a soil and Milli-Q water slurry. Total phosphorus was measured by colorimetry after decarbonization. C/N ratio was calculated from total carbon and nitrogen content measured from spectroscopy (Carlo Erba CNS2500 CHN elemental analyzer). Total organic carbon (TOC) and mineral carbon (MINC) were measured by pyrolysis. The mineralogy was determined by X-Ray powder diffraction and fluorescence. A description of these analyses can be found in Yashiro et al. (2016) and Buri et al. (2020).

Topo-climatic descriptors were derived from data of the Swiss Meteorological Network (resolution 25 m; average trends for the period 1961–1990; <https://www.meteoswiss.admin.ch>) and Swisstopo (resolution 25 m <https://www.swisstopo.admin.ch/>). The descriptors were elevation (mnt25), slope steepness (slope), slope orientation (asp25) and the sinus of the orientation (aspvar), topographic position (topo), topographic wetness index (twi25), site water balance (swb), shortwave radiation per month (sumrady), monthly mean precipitation sum (precy), number of precipitation days per growing season

(pday), monthly moisture index (mmind68), monthly average temperature (taveyy), annual degree-day above 0 °C (ddeg0), and number of frost days during the growing season (sfroy) (Pradervand et al. 2014; Yashiro et al. 2016, 2018; Buri et al. 2020; Mod et al. 2020, 2021). In addition to these descriptors, bioclimatic descriptors were added from the Chelsa database (Karger et al. 2017) (Table S1).

For each environmental descriptor, the few missing values (1 rh, 4 spectroscopy, 3 mineralogy, 6 C/N when nitrogen content was below the detection limit) were inferred by nearest neighbour averaging (function `preProcess`, method `'knnImpute'`, package `caret` v. 6.0-86 Kuhn 2020). The dimensionality of the environmental descriptor dataset was reduced using a principal component analysis. In order to capture 80% of the total variance in each dataset, we retained the first eleven PCA axes (Figure S1).

Landscape descriptors

The landscape descriptors have been calculated based on the 10 m resolution land cover raster derived from Sentinel-2 imagery (Malinowski et al. 2020) (<http://s2glc.cbk.waw.pl/>). This raster includes 13 land cover categories such as coniferous forest (representing 27.2% of the study area), herbaceous vegetation (25.6%), moors and heathlands (16.2%), and broadleaf tree forest (11.0%). A total of 13 descriptors commonly used in landscape ecology studies and representing different aspects of landscape configuration and composition were computed (see Table 1 for details). To explore the spatial scale at which landscape structure impacts soil protists diversity, each descriptor was calculated in various circular areas of different radius around the sampling coordinate (neighbourhood window size = 100, 200, 500, 1000, and 2000 m; Figure S2).

Protist community

DNA extraction, PCR, sequencing

DNA was extracted from 0.25 g of soil samples in triplicates with the MoBio PowerSoil DNA extraction kit (Mo Bio Laboratories, Carlsbad, CA, USA) following the manufacturer's instructions. The V4 region of the 18S rRNA gene was then amplified using the general eukaryotic primers TAREuk454FWD1 and

Table 1 List of the selected landscape descriptors

Abbreviation	Descriptor	Level	Explanation (units)
area	Sampling patch area	Patch	Hectares
area_mn	Average size of meadow patches	Class	Hectares
%_meadow	% of meadows	Class	% of herbaceous vegetation within the neighbourhood window
%_anthro	% of artificial habitat	Class	% of artificial surfaces i.e. constructed and cultivated areas within the window
%_forest	% of forests	Class	% of broadleaf and coniferous tree cover within the window
%_open	% of open vegetated habitat	Class	% of herbaceous vegetation, moors, heathland, sclerophyllous vegetation, marshes, and peat bogs within the window
frac	Fractality	Patch	Complexity of the sampling patch
cai	Core area index	Patch	Area of the sampling patch minus the pixel touching another patch (percentage)
ed	Edge density	Class	Sum of all meadow edges divided by the area of the raster (metres per hectare)
iji	Interspersion and juxtaposition index	Class	Intermixing of meadows within other habitat classes (percent)
clumpi	Clumpiness	Class	Calculate the disaggregation of the meadows
division	Division	Class	Probability that two meadow points are not in the same patch
shdi	Shannon diversity index of habitat	Landscape	Descriptor increasing according to the number of landscape classes and evenness of these classes

TAREukREV3 (Stoeck et al. 2010). PCR amplification details can be found in Seppey et al. (2020). Paired-end reads (2 × 300 bp) were then sequenced from an Illumina MiSeq sequencer at the University of Geneva (Molecular Systematics & Environmental Genomics Laboratory) as in Seppey et al. (2020). Sequences are available on the European Nucleotide Archive under the project PRJEB30010 (ERP112373).

Bioinformatic pipeline

Taken together, all samples provided 128,581,740 raw reads that were analysed with a pipeline based on VSEARCH v. 2.15.2 (Rognes et al. 2016). The reads were first merged with Flash v. 1.2.11 (Magoc and Salzberg 2011) before removing the sequences shorter than 250 nucleotides. Reads with a quotient between expected error and sequence length below 0.01 as well as chimaeras were discarded. The 23,486,785 reads left (18%) were then clustered into 1,215,009 OTUs with the Swarm algorithm using the fastidious option (v. 3.1.0 Mahé et al. 2021).

The taxonomic assignment of the OTUs was performed in two steps. The first part was aiming to identify and remove the OTUs not belonging to protists (i.e. Prokaryotes, Metazoa, Embryophyta and Fungi).

This was done by using the best alignment from a pairwise local alignment (blastn v. 2.9.0; Camacho et al. 2009) of the OTUs dominant sequences on the pooled PR² 4.12.0 (Guillou et al. 2013) and Silva v. 138 (non-redundant at 99% Pruesse et al. 2007) databases. The second part consisted of the final assignment of the remaining OTUs by aligning their dominant sequences against the PR² database v. 4.12.0 using the best alignment of a global pairwise alignment (ggsearch36 v. 36.3.8, (Pearson 2000)). Prior to the global pairwise alignment, the PR² database was trimmed according to the primers used for the sequencing after a multiple sequence alignment performed with ClustalW v. 2.1 (Larkin et al. 2007).

From the 178 plots, 4 were sampled twice and 13 three times during the sampling period. For each of these plots, OTUs abundance was estimated as the median of the number of sequences retrieved from the different samples. In addition, 16 plots with a low number of sequences were removed by using the breaking point of a piecewise linear model on the sorted log of the number of sequences per sample (observed threshold = 6047 sequences) (Figure S3). In total, 162 plots were kept for further analyses. We then discarded the OTUs with near-zero variance (ratio between the two most frequent OTU abundance below 95/5, and unique number of sequences within

an OTU below 10% of the number of samples; function `nearZeroVariance`, package `caret` v. 6.0-86 Kuhn 2020). The final dataset included 162 plots and 3992 protist OTUs.

Statistical analyses

To assess local alpha diversity, the Shannon diversity index was calculated for each community. To test the importance of landscape structure for soil protist alpha diversity, a random forest algorithm was used to model the response of soil protist Shannon diversity to landscape and environmental descriptors. Prior to the modelling, all landscape and environmental descriptors were scaled to a standard deviation of 1 and centred to a mean of 0. Several runs of random forest were conducted within a tenfold cross-validation stratified according to the response variable, repeated three times. The models used 500 trees and a maximum depth of 125 nodes (default parameters of the function `train`, package `caret` v. 6.0-86 Kuhn 2020). The number of variables per split (`mtry=2, 14, 27`; hyperparameter tuning) was selected to optimise model performance (based on the best R^2). The importance of each descriptor was estimated as the mean decrease in accuracy after permuting the target descriptor (function `varImp`, package `caret` v. 6.0-86 Kuhn, 2020). To allow comparisons among models, the importance of each descriptor was weighted by the R^2 of the model. To assess the directions of the effect, partial dependence plots (Goldstein et al. 2015, function `partial`, package `pdp` v. 0.7.0 Greenwell, 2017) were computed for each descriptor. Partial dependence plots summarise the marginal effect that an environmental or landscape descriptor has on the predicted values of each diversity metric (i.e. effect of a target descriptor when all others are kept constant). This procedure was repeated for each neighbourhood window.

Changes in protist community composition among sites (beta diversity) were measured using abundance-based Bray–Curtis dissimilarity following the approach of Baselga et al. (2013). We assessed the rate of distance-decay of the protist communities as the slope of a linear regression on the relationship between protist Bray–Curtis dissimilarity and geographic distance, both log-transformed. Because of the non-independence of pairwise comparisons, we used a matrix permutation test to assess the statistical

significance of the distance-decay slope. Specifically, the rows and columns of the protist Bray–Curtis dissimilarity matrix were permuted 1000 times, and the observed slope was compared with the distribution of values in the permuted datasets. We also tested whether the environmental and landscape descriptors (for each of the five neighbourhood windows) were responding to geographic distance using the same permutation procedure.

To test whether landscape structure drives changes in protist community composition, we first performed an RDA on the protist community dissimilarity matrix using landscape, environmental and spatial descriptors. The spatial descriptors consisted of a selection of 16 principal coordinates of neighbourhood matrix (PCNM) calculated from the Euclidean distances between plots (Borcard and Legendre 2002). The PCNM descriptors showing the strongest correlations to the protist Bray–Curtis dissimilarities were selected by stepwise selection (function `ordstep`, package `vegan` v2.6-2; Oksanen et al. 2022). We used a PERMANOVA (function `anova.cca`, package `vegan` v2.6-2; Oksanen et al. 2022) to test the significance of marginal effect of each variable included in the RDA. Secondly, we tested the variation explained by each of the three sets of variables through variation partitioning (Borcard et al. 1992, function `varpart`, package `vegan` v.2.6-2; Oksanen et al. 2022).

The bioinformatic pipeline and all statistical analyses can be found on <https://gitlab.com/cseppey/milan>. All statistical analyses were performed in R 4.2.2.

Results

Protist community composition

Soil protist diversity was dominated by Alveolata and Rhizaria, which represented 37% and 33% of the sequences, respectively. Figure S4 provides further information about protist community composition.

Influence of landscape structure on soil protist diversity

Landscape structure had a significant effect on protist Shannon diversity. The amount of variation in protist Shannon diversity explained by landscape descriptors was greater than the one explained by environmental

descriptors when using larger neighbourhood windows (500 m to 2000 m around plot centre) and lower when using smaller neighbourhood windows (100 and 200 m: Fig. 2A). The percentage of open vegetated habitats around a plot explained the highest amount of variation in protist Shannon diversity among all landscape descriptors (Fig. 2B), whereas patch level descriptors (patch area, patch core area, and patch

fractality) explained the lowest amount. The three landscape descriptors that explained the largest part of soil protist Shannon diversity were the percentage of open vegetation in 500 m neighbourhood windows, the percentage of meadows (1000 m) and edge density (1000 m). Specifically, protist alpha diversity was positively correlated with the percentage of open vegetation (500 m) and followed a unimodal relation with

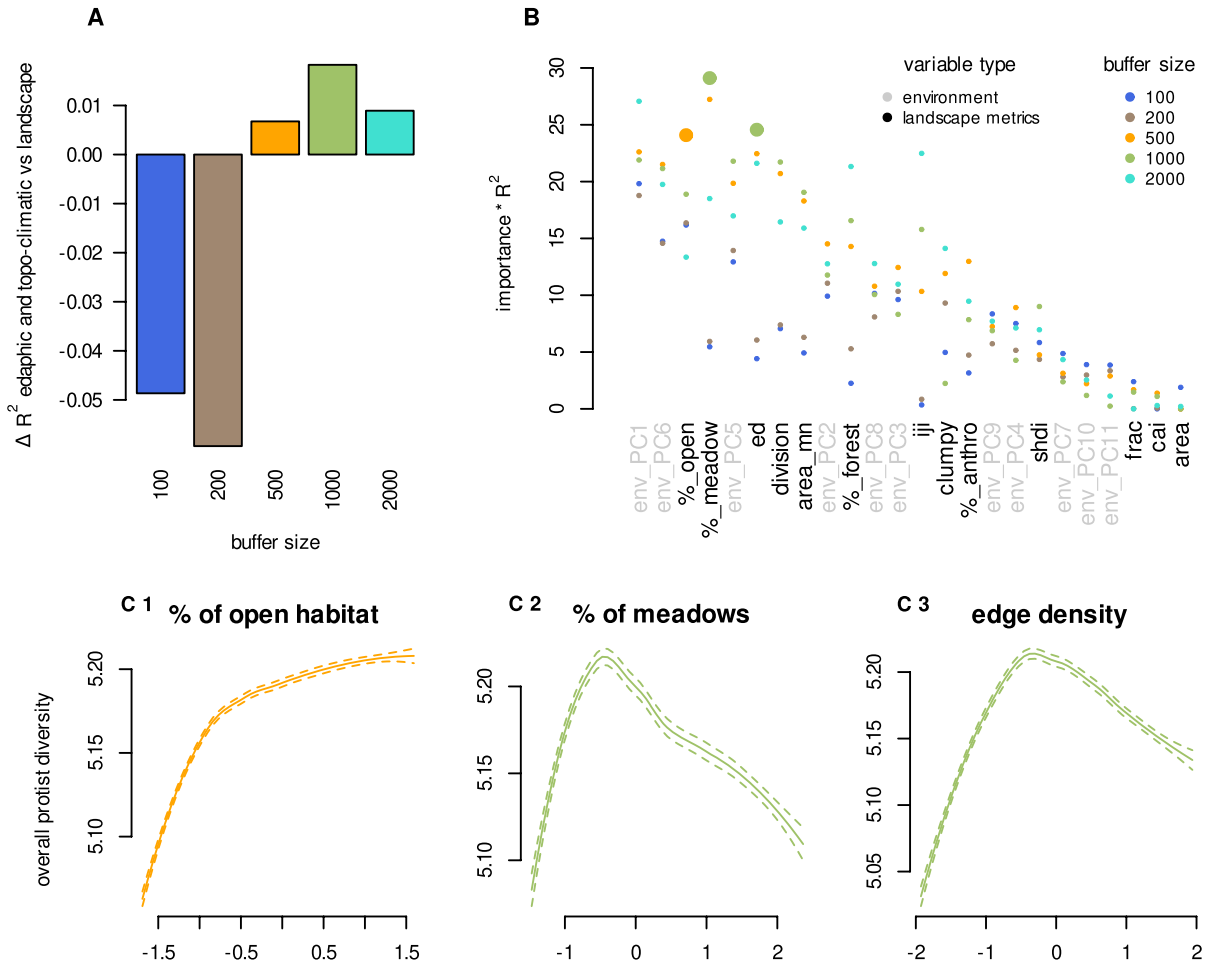


Fig. 2 Effect of landscape structure on soil protist Shannon diversity. A) Difference between the variation in total protist diversity explained by landscape descriptors versus environmental descriptors in random forest models ($R^2_{\text{landscape}} - R^2_{\text{environment}}$). B) Variability in the importance of landscape and environmental descriptors for the description of overall soil protist Shannon diversity in random forest models. The importance has been weighted by the R^2 of the model to allow comparisons among models. Landscape descriptors are shown in black, and environmental descriptors in grey. The three landscape descriptors with the highest importance are highlighted

(percentage of open vegetated habitats, edge density, and percentage of meadows). C) Partial dependence plots showing the trends of soil protist Shannon diversity along the three most important landscape descriptors. For each sub-figure, the y-axis reflects the effect that the target landscape descriptor has on the predicted values of the response variable while keeping all other descriptors constant. The x-axis represents the centred and scaled values of the three landscape descriptors that best explain protist Shannon diversity. Colours indicate the most important (importance * R^2) neighbourhood window sizes

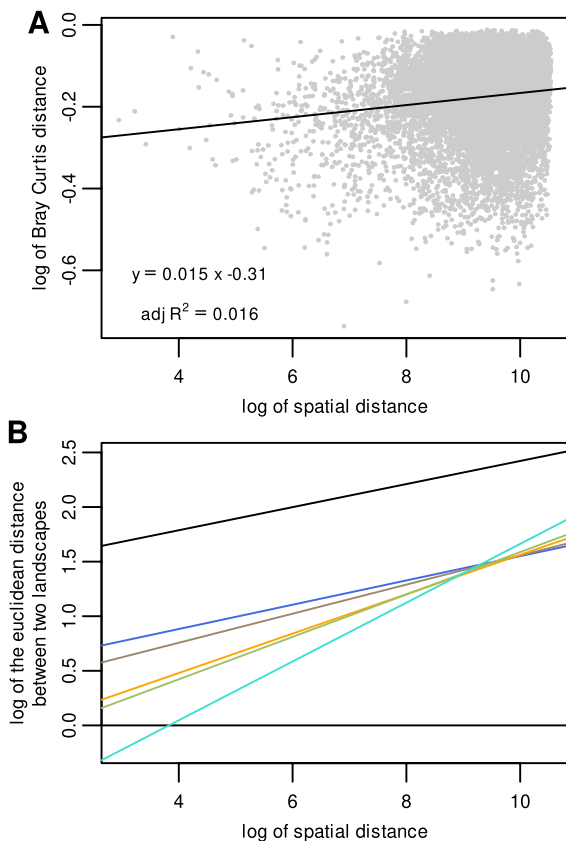


Fig. 3 Distance-decay curves for the A) protist communities and B) landscape and environmental descriptors. All distance-decay curves are shown in log–log scale for optimal visualisation. B) The different lines correspond to distance-decay relationships for environmental (black) and landscape descriptors calculated in neighbourhood windows of 100 m (blue), 200 m (brown), 500 m (orange), 1000 m (green) and 2000 m (cyan). All slopes were significantly different from a null model obtained by permuting 1000 times the samples of the dependent variable with p -values ≤ 0.001

the percentage of meadows (1000 m) and edge density (1000 m) (Fig. 2C). The importance and direction of the effect of each landscape descriptor on Shannon diversity can be found in Figure S5.

Changes in protist community composition

We found a significant positive relationship between protist community dissimilarity and geographic distance among plots (slope=0.015, $P < 0.01$; Fig. 3A). In addition, we found significant positive relationships between the dissimilarity of environmental or

landscape descriptors and geographic distance among plots (Fig. 3B). It is noteworthy that the slopes of environmental descriptors (slope=0.106) were less steep than the ones calculated for landscape descriptors. The slopes of the landscape-based DDR were also steeper for larger neighbourhood window sizes (100 m: 0.111; 200 m: 0.133; 500 m: 0.180; 1000 m: 0.194; 2000 m: 0.269).

Redundancy analyses showed that landscape, environmental and spatial descriptors jointly influenced protist beta diversity (Fig. 4). The amount of variation in protist beta diversity explained by landscape descriptors was comparable to the one explained by environmental or spatial descriptors. It is also noticeable that the landscape effect increased with the size of the neighbourhood window, even explaining a slightly higher portion of the variation in protist community composition than spatial or environmental variables when calculated in larger neighbourhood windows (2000 m, Fig. 4). In addition, PERMANOVA analyses showed that the landscape variables which significantly contribute to explain changes in protist beta diversity varied among scales (Table 2). For instance, the percentage of anthropic, forested or vegetated open area played a major role at the smaller scales (100 m and 200 m windows) while landscape descriptors such as clumpiness or the Shannon diversity index of habitat were only significant when calculated in larger windows (500 m to 2000 m windows).

Discussion

We showed the importance of landscape structure in explaining protist alpha and beta diversity. This adds to the body of evidence showing the importance of spatial environmental factors such as topography, and climate (Seppely et al. 2020) in structuring protist communities and provides new insights on the potential effects of land-use change. Landscape descriptors show comparable importance to environmental and spatial ones, which establish them as a promising tool for a wide range of spatial analyses. As expected, the effect of landscape structure on both protist alpha and beta diversity was scale-dependent and maximal for neighbourhood windows between 500 and 2000 m. These results

Fig. 4 Redundancy analyses showing the effect of landscape (lscp), environmental (env), and spatial variables (PCNM, spat) on protist communities. The panels on the left show the full RDAs with arrows representing the contribution of significant variables (see Table 2). The five RDAs were done using landscape variables calculated in different neighbourhood sizes (A: 100 m; B: 200 m; C: 500 m; D: 1000 m; E: 2000 m). The variance on the two first axes range between 0.066 and 0.068, and 0.037 and 0.040, respectively. The total variance explained by the RDAs range between 0.14 and 0.15 (adjusted- R^2). The panels on the right show the partitioning of the variation in protist communities among landscape, environmental and spatial variables. The significance of the different fractions is given in Table S3

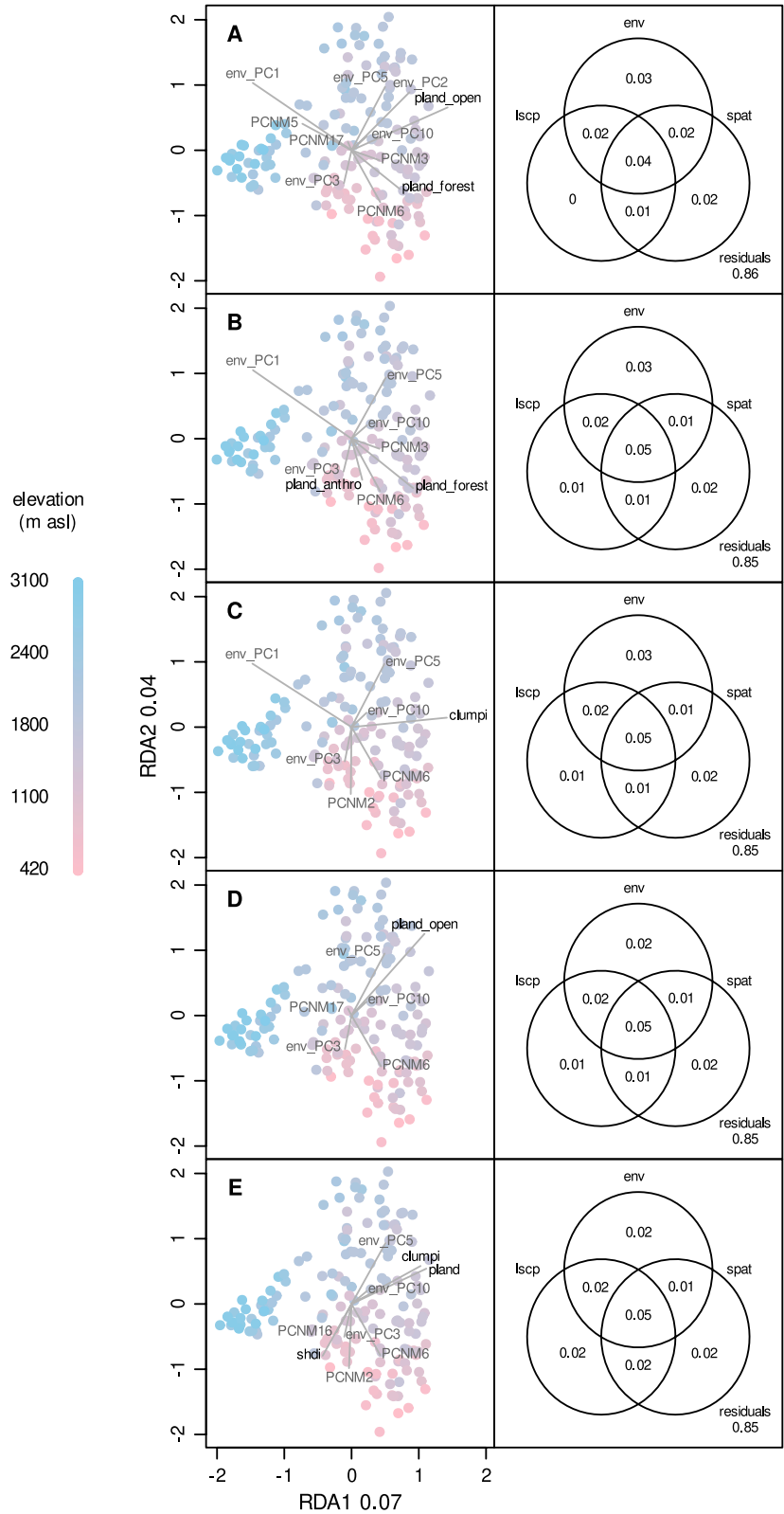


Table 2 Summary statistics of permutation-based analysis of variance (PERMANOVA). The significance of the marginal effect of each variable included in the RDA is shown. Variables are grouped in three categories: landscape, environmental, and spatial descriptors. Stars indicate significant p-values: “****” ≤ 0.001 , “***” ≤ 0.01 , “**” ≤ 0.05 , “.” ≤ 0.1

		100	200	500	1000	2000
Landscape	area					
	area_mn					
	pland					*
	pland_anthro	.	*			.
	pland_forest	*	*			
	pland_open	*	.		*	
	ed					.
	frac					
	cai					
	iji					
	clumpi		.	*	.	*
	division					
	shdi					*
	Environment	env_PC1	*	*	*	
env_PC2		*				
env_PC3		**	*	*	*	*
env_PC4						
env_PC5		**	**	**	***	**
env_PC6						
env_PC7						
env_PC8						
env_PC9						
env_PC10		*	*	*	*	*
env_PC11						
Space	PCNM5	*	.	.	.	
	PCNM2	.	.	*	.	*
	PCNM8					
	PCNM1					
	PCNM6	*	*	**	**	**
	PCNM12				.	
	PCNM4					
	PCNM3	*	*	.	.	
	PCNM11					
	PCNM9					
	PCNM7					
	PCNM17	*	.	.	*	.
	PCNM16		.	.		*
	PCNM14	.	.	.		
PCNM10						
PCNM13	

confirm that local protist community composition strongly depends on landscape-scale assembly

processes such as dispersal from the regional pool of taxa.

Landscape structure influences local protist alpha diversity

Our results highlight the key role of landscape structure for soil protist alpha diversity in alpine meadows. Landscape composition descriptors (e.g. percentage of open vegetated habitats or meadows around each plot) had the most important effect on soil protist diversity. On the contrary, landscape configuration descriptors (e.g. division, interspersion and juxtaposition index), although important, contributed less. Interestingly, patch-scale descriptors had a consistently low influence on soil protist diversity and, therefore, cannot explain the observed changes in protist diversity. Overall, these results agree with the ‘habitat amount hypothesis’ that suggests that the proportion of habitat type in the landscape is more important than its spatial distribution (Laine and Hanski 2006; Fahrig et al. 2015). These conclusions are similar to those of previous works on the distribution of fungi in old forests (Mennicken et al. 2020), suggesting that similar mechanisms impact protists and fungi following land-use change. While these convergent lines of evidence suggest that these conclusions are valid for all soil microbes, they are in strong contradiction with studies focusing on plants and animals, where patch size and shape have strong effects on local population dynamics (Reed 2004; Prevedello and Vieira 2010). This difference between macro- and microorganisms can be explained by differences in population size. Indeed, for the same area, the population size of microbes is larger by several orders of magnitude than that of macroorganisms. As such, population size fluctuations and genetic drift (and other population processes) are less likely to be problematic for microbes at the scale of a meadow.

In our study, a high proportion of open vegetated habitats around the plot had a positive effect on local diversity whereas a high proportion of artificial habitats (built-up and cultivated) had a negative one (Figure S5). Maximal protist diversity was observed for intermediate proportions of forest in the surrounding landscape (Figure S5). This can be explained by three different processes. First, protist communities in forests have been shown to be less diverse than those in meadows (Seppey et al. 2017). Then, open vegetated habitats are not homogeneous and include a large variety of ecosystem types (herbaceous vegetation, moors, heathland,

sclerophyllous vegetation, marshes, and peat bogs), each one having its specific protist communities. For this reason, open vegetated habitats as a whole are more likely to host a higher diversity than forests (more homogeneous) or artificial habitats. Assuming similar niche-based filtering or dispersal among habitats, these differences in protist diversity among habitats are sufficient to explain the observed patterns. However, another potential explanation is that the closed structure of forest and artificial habitats hampers protist dispersal, which is likely caused by wind (Wilkinson et al. 2012). If true, fewer taxa should be able to colonise a meadow plot from the forest or artificial habitats than from open vegetated habitats. It follows that differences in dispersal alone could explain the observed patterns. Finally, the different environmental conditions such as soil type and moisture can hamper species from the forest or artificial habitat to colonise the meadow which would suggest a stronger filtering through niche processes of species adapted to forest or artificial habitats. These three potential explanations are not mutually exclusive and interactive effects are likely.

Despite the higher influence of landscape composition on protist alpha diversity, our results also point towards strong edge effects (Fig. 2C). Edges are hotspots of biodiversity because of the presence of species associated with different habitats alongside ecotonal species (Descombes et al. 2017). They are also an important source of dispersal to neighbouring habitats (Molnar et al. 2001). In microbial ecology, only a few studies have investigated community composition in transition zones between habitats. For example, Boeraeve et al. (2019) showed that both distance to the forest edge and edge orientation to the south influence mycorrhizal communities of trees (*Alnus glutinosa*). In our study, soil protist diversity was maximal at intermediate edge density. A low edge density means a lower likelihood that colonists from adjacent habitats settle down in the meadow. Ecotonal specialists might also be lacking when edge density is too low. The lower local protist diversity at high edge density can tentatively be explained by two mechanisms. On the one hand, high edge density might favour a few generalist species over specialist taxa. Generalists can survive in various habitats and are more likely to benefit from highly mixed landscape habitat mosaics. On the other hand, edge density was

positively correlated with the area of urban habitat (Spearman correlation $p < 0.001$, $\rho = 0.44$). As these habitats have a negative contribution to local diversity, soil protist diversity is lower than when only habitats with positive contributions to diversity are present. In this case, edge density would reflect a compositional effect rather than a true edge effect.

Altogether, protist alpha diversity in the Alps is favoured by a diversified landscape, containing equilibrated amounts of meadows and forests, but also to some extent artificial habitats. This stands in contrast with current tendencies towards increasing urbanisation and meadow recolonisation by forests as a result of agricultural abandonment (Spiegelberger et al. 2006). Diversified protist communities are key in many soil ecosystem services, such as carbon storage and plant production (Geisen et al. 2019). The disappearance of traditional lifestyles in the Alps (Spiegelberger et al. 2006) can be expected to modify the structure and functioning of the soil microbial food-web. Such modifications can lead to more negative impacts on Alpine meadows than previously assessed based on macroorganisms alone (Spiegelberger et al. 2006). Overall, maintaining sufficient landscape diversity in the Alps while avoiding excessive fragmentation is thus likely to have a positive effect on meadow soil protist diversity and functionality as observed in macroorganism groups such as Orthoptera (Essl and Dirnboeck, 2012), or plants and pollinators in general (Jones et al. 2019).

Landscape structure modulates the rate of distance-decay in protist beta diversity

We found a significant distance-decay relationship in protist community dissimilarity (Fig. 3A) as already observed in different environmental contexts (Lentendu et al. 2018; Macingo et al. 2019). This distance-decay can in part be explained by changes in environmental conditions (niche-based processes), especially soil moisture (env_PC5) and organic carbon content (env_PC3) which were the most significant environmental descriptors in the RDAs (Fig. 4) and by dispersal effect due to a decrease in propagule flow among habitats with distance. Importantly, our results highlight that landscape structure has a key effect on the rate of distance-decay. Landscape structure indeed explained a similar portion of the variation in protist community composition as environmental and spatial

variables (Fig. 4). Landscape distance-decay was also significant, showing that two plots far apart tend to have more different landscape structure than two plots close to each other (Fig. 3B). Furthermore, the effect of landscape structure on the rate of distance decay was dependent on the size of the neighbourhood window used to calculate landscape descriptors. Indeed, the slopes of the DDRs (Fig. 3B) and the importance of landscape effects increased with the size of the neighbourhood window (Fig. 4). In addition, different landscape descriptors correlate with protist dissimilarity depending on the size of neighbourhood window considered (Table 2) suggesting scale-dependent effects of landscape structure on the rate of distance-decay.

Overall, our results suggest that landscape structure modulates the rate of distance-decay by influencing niche-based and dispersal processes. Three main mechanisms can be evoked here: dispersal excess (mass effect, Leibold et al. 2004), environmental filtering (species sorting), and dispersal limitations. Dispersal excess or mass effect can be expected over short distances (where dispersal limitations are unlikely) and among habitats having different environmental characteristics (source and sink habitats) (Mouquet and Loreau 2003; Leibold et al. 2004; Urban 2006; Logue et al. 2011). This fits with the significant effect of percentage of forest and anthropic habitats in neighbourhood windows of 100 m or 200 m radii on protist community dissimilarity. Under mass effects, two meadows surrounded by similar forest habitats will host an important number of forest species even if those species are maladapted to local conditions. This will result in a lower beta diversity than expected based on local environmental differences or geographic distance alone. Species sorting results in a matching between the environmental conditions and community composition and is expected in the absence of dispersal limitation or excess. Landscape structure determines the taxonomic composition and size of the landscape pool of taxa that can potentially colonise a focal plot. Two plots with similar environmental conditions will impose a similar filtering on the landscape pool of potential colonists. However, if the composition of those pools differs (e.g. because of different landscape structure), environmental filtering will select or filter different species thereby impacting beta diversity. In agreement with this idea, the observed effect of the percentage

of open habitats (1000 m) and meadows (2000 m) can be related to changes in the composition of the landscape pool of potential colonists. Finally, landscape structure has been shown to influence the rate of organism dispersal among habitat patches in several taxonomic groups such as plants (Auffret et al. 2017), mammals (Hämäläinen et al. 2019), and arthropods (Bonte et al. 2006). In our case, low clumpiness of meadows can increase inter-patch distances thereby increasing dispersal risks and reducing movements among patches (Fahrig 2007). Furthermore, landscape composition can facilitate or hamper dispersal rates among habitat patches. For instance, large patches of low vegetation such as in moors and heatlands or sclerophyllous vegetation can facilitate dispersal by wind whereas the closed structure of forest patches might hamper dispersal by wind. However, how landscape structure influences the dispersal of protists likely depends on the dispersal mode of specific taxa, where important differences between free living taxa (expected to disperse by wind) and parasites (depending on host movement) can be expected. Generally, the precise mechanisms responsible for the patterns observed in this study need to be confirmed by experimental studies.

Overall, our results highlight the importance of dispersal from surrounding habitats for protist community composition. Microbial community dynamics should thus be considered at the landscape-scale using a metacommunity perspective (Leibold et al. 2004; Beisner et al. 2006; Cadotte 2006) which has important consequences for land-use management in the Alps and in general. Indeed, changes in landscape structure are likely to modify assembly processes, thereby impacting the composition, functionality and resilience of soil protist communities (Saleem et al. 2019). As soil protists are key players in soil food webs (Xiong et al. 2018), these changes can potentially have a cascading impact on ecosystem functioning and services such as fertility as well as carbon sequestration and storage (Jassey et al. 2022). It is thus likely that the ongoing agricultural abandonment and urbanisation in the Alps (Vannier et al. 2016) will lead to local and regional decreases in protist diversity in meadow soils with potentially important consequences for the functioning of these ecosystems.

Future developments of microbial landscape ecology

While the present study and several other recent works (Mennicken et al. 2020; Mony et al. 2021, 2022) provide a strong basis to further develop the field of microbial landscape ecology, much remains to be done. One of the most important questions arising from our work is the actual rate of dispersal (excess or limitations) of protists and microbes in general from surrounding habitats (Frey 2015). The influence of barriers to dispersal across different microbial taxa (Wilkinson and Mitchell 2010; Paz et al. 2021) needs to be investigated in the future. Likewise, questions arise about the generalisability of our results. Would we observe a similar relationship linking landscape and protist diversity in other habitats or regions (e.g. tropical areas)? Would other microbial groups show similar patterns (e.g. bacteria, fungi, archaea)? This last question is worth investigating, as, for instance, Mennicken et al. (2020) showed that bacteria and fungi responded differently to landscape composition. Finally, while our results highlight the importance of landscape structure for local protist community diversity and composition, the functional consequences of those changes and their magnitude remain unclear. Similarly, the extent to which these changes influence other taxa, including other microorganisms and macroorganisms, needs to be investigated.

Conclusion

Our results highlight the importance of landscape structure, especially changes in the composition of neighbouring habitats, in structuring soil microbial diversity in alpine meadows. Landscape structure in the larger neighbourhood windows (radii of 500 m to 2000 m) was as important as the commonly used edaphic parameters in describing protist alpha and beta diversity. We showed that, like macroorganisms, soil protists are strongly impacted by changes in landscape structure, which is likely to have important consequences on ecosystem structure and functioning. Using landscape ecology approaches in microbial ecology studies can improve our understanding of the drivers of and capacity to predict spatial patterns of microbial diversity. Microbial landscape ecology is a promising avenue to improve our understanding of

the impact of land-use changes on biodiversity and ecosystem functions.

Acknowledgements B.F. and C.V.W.S. acknowledge the WISNA program from the German Federal Ministry of Education and Research. B.F. acknowledges the project “Fun-Shift” (project FO 1420/1-1) awarded by the German Research Foundation, DFG. E.L. acknowledges the program “Atracción de Talento Investigador” from the Community of Madrid (project 2017-T1/AMB5210) and the project Myxotropic VII PID2021-128499NB-I00 awarded by the Spanish Government.

Author contributions The study was conceived by B.F. and C.V.W.S. and designed with input from all authors. Sampling design, fieldwork, and laboratory analyses were carried out by A.G., E.Y., and D.S. C.V.W.S. carried out the bioinformatic and statistical analyses. B.F. and C.V.W.S. led the writing of the manuscript, all authors contributed to drafts of the manuscript and gave final approval for publication.

Funding Open Access funding enabled and organized by Projekt DEAL.

Data availability All DNA sequences are available on the European Nucleotide Archive project number: PRJEB30010 (ERP112373). Edaphic variables are available from Dryad repository: <https://doi.org/10.5061/dryad.ftdz08p7>. Details about the topo-climatic data can be found at https://www.unil.ch/files/live/sites/ecospat/files/shared/PDF_site/chclim25.pdf.

Declarations

Conflict of interest The authors declare no competing interests.

Ethical approval The study was conceived by B.F. and C.V.W.S. and designed with input from all authors. Sampling design, fieldwork, and laboratory analyses were carried out by A.G., E.Y., and D.S. C.V.W.S. carried out the bioinformatic and statistical analyses. B.F. and C.V.W.S. led the writing of the manuscript, all authors contributed to drafts of the manuscript and gave final approval for publication.

Open Access This article is licensed under a Creative Commons Attribution 4.0 International License, which permits use, sharing, adaptation, distribution and reproduction in any medium or format, as long as you give appropriate credit to the original author(s) and the source, provide a link to the Creative Commons licence, and indicate if changes were made. The images or other third party material in this article are included in the article's Creative Commons licence, unless indicated otherwise in a credit line to the material. If material is not included in the article's Creative Commons licence and your intended use is not permitted by statutory regulation or exceeds the permitted use, you will need to obtain permission directly from the copyright holder. To view a copy of this licence, visit <http://creativecommons.org/licenses/by/4.0/>.

References

- Auffret AG, Rico Y, Bullock JM, Hooftman DAP, Pakeman RJ, Soons MB et al (2017) Plant functional connectivity-integrating landscape structure and effective dispersal. *J Ecol* 105(6):1648–1656
- Baselga A, Orme D, Vileger D, De Bortoli J, and Leprieur F. (2013) betapart: Partitioning beta diversity into turnover and nestedness components 1.3 edition. URL <http://CRAN.R-project.org/package=betapart>.
- Beisner BE, Peres Neto PR, Lindstrom ES, Barnett A, Longhi ML (2006) The role of environmental and spatial processes in structuring lake communities from bacteria to fish. *Ecology* 87(12):2985–2991
- Betts MG, Hadley AS, Kormann U (2019) The landscape ecology of pollination. *Landsc Ecol* 34(5):961–966
- Boeraeve M, Honnay O, Jacquemyn H (2019) Forest edge effects on the mycorrhizal communities of the dual-mycorrhizal tree species *Alnus glutinosa* (L.) Gaertn. *Sci Total Environ* 666:703–712
- Bonte D, Vanden Borre J, Lens L, Maelfait J (2006) Geographical variation in wolf spider dispersal behaviour is related to landscape structure. *Anim Behav* 72(3):655–662
- Borcard D, Legendre P (2002) All-scale spatial analysis of ecological data by means of principal coordinates of neighbour matrices. *Ecol Model* 153(1–2):51–68
- Borcard D, Legendre P, Drapeau P (1992) Partialling out the spatial component of ecological variation. *Ecology* 73(3):1045–1055
- Bousset L, Sprague SJ, Thrall PH, Barrett LG (2018) Spatio-temporal connectivity and host resistance influence evolutionary and epidemiological dynamics of the canola pathogen *Leptosphaeria maculans*. *Evol Appl* 11(8):1354–1370
- Bronzizio ES, Settele J, Diaz S, and Ngo HT (2019) Global assessment report on biodiversity and ecosystem services of the Intergovernmental Science-Policy Platform on Biodiversity and Ecosystem Services. Technical report Intergovernmental Science-Policy Platform on Biodiversity and Ecosystem Services
- Buri A, Grand S, Yashiro E, Adatte T, Spangenberg JE, Pinto-Figueroa E et al (2020) What are the most crucial soil variables for predicting the distribution of mountain plant species? A comprehensive study in the Swiss Alps. *J Biogeogr* 47(5):1143–1153
- Cadotte MW (2006) Metacommunity influences on community richness at multiple spatial scales: a microcosm experiment. *Ecology* 87(4):1008–1016
- Camacho C, Coulouris G, Avagyan V, Ma N, Papadopoulos J, Bealer K, Madden TL (2009) BLAST plus : architecture and applications. *BMC Bioinform* 10:5
- Cardinale BJ, Duffy JE, Gonzalez A, Hooper DU, Perrings C, Venail P et al (2012) Biodiversity loss and its impact on humanity. *Nature* 486(7401):59–67
- Chu H, Fierer N, Lauber CL, Caporaso JG, Knight R, Grogan P (2010) Soil bacterial diversity in the Arctic is not fundamentally different from that found in other biomes. *Environ Microbiol* 12(11):2998–3006

- Cruz-Paredes C, Bang-Andreasen T, Christensen S, Ekelund F, Froslev TG, Jacobsen CS et al (2021) Bacteria respond stronger than Fungi across a steep wood ash-driven pH gradient. *Front for Global Change* 4:15
- D'Amen M, Rahbek C, Zimmermann NE, Guisan A (2017) Spatial predictions at the community level: from current approaches to future frameworks. *Biol Rev* 92(1):169–187
- Dengler J, Janisova M, Toeroek P, Wellstein C (2014) Biodiversity of Palaearctic grasslands: a synthesis. *Agric Ecosyst Environ* 182:1–14
- Descombes P, Vittoz P, Guisan A, Pellissier L (2017) Uneven rate of plant turnover along elevation in grasslands. *Alp Bot* 127(1):53–63
- Ellis EC, Ramankutty N (2008) Putting people in the map: anthropogenic biomes of the world. *Front Ecol Environ* 6(8):439–447
- Essl F, Dirnboeck T (2012) What determines Orthoptera species distribution and richness in temperate semi-natural dry grassland remnants? *Biodivers Conserv* 21(10):2525–2537
- Fahrig L (2007) Non-optimal animal movement in human-altered landscapes. *Funct Ecol* 21(6):1003–1015
- Fahrig L, Girard J, Duro D, Pasher J, Smith A, Javorek S et al (2015) Farmlands with smaller crop fields have higher within-field biodiversity. *Agr Ecosyst Environ* 200:219–234
- Fierer N, Colman BP, Schimel JP, Jackson RB (2006) Predicting the temperature dependence of microbial respiration in soil: a continental-scale analysis. *Global Biogeochem Cycles* 20(3):15
- Fournier B, Mouquet N, Leibold MA, Gravel D (2017) An integrative framework of coexistence mechanisms in competitive metacommunities. *Ecography* 40(5):630–641
- Fournier B, Dos Santos P, Sofia GJA, Imfeld G, Lamy F, Mitchell EAD et al (2020) Impact of a synthetic fungicide (fosetyl-Al and propamocarb-hydrochloride) and a biopesticide (*Clonostachys rosea*) on soil bacterial, fungal, and protist communities. *Sci Total Environ* 738:139635
- Frey SD (2015) Chapter 8 - the spatial distribution of soil biota. In: Paul EA (ed) *Soil microbiology, ecology and biochemistry*, 4th edn. Academic Press, Boston, pp 223–244
- Geisen S (2016) The bacterial-fungal energy channel concept challenged by enormous functional versatility of soil protists. *Soil Biol Biochem* 102:22–25
- Geisen S, Wall DH, van der Putten WH (2019) Challenges and opportunities for soil biodiversity in the anthropocene. *Curr Biol* 29(19):R1036–R1044
- Glaeser J, Overmann J (2004) Biogeography, evolution, and diversity of epibionts in phototrophic consortia. *Appl Environ Microbiol* 70(8):4821–4830
- Goldstein A, Kapelner A, Bleich J, Pitkin E (2015) Peeking inside the black box: Visualizing statistical learning with plots of individual conditional expectation. *J Comput Graph Stat* 24(1):44–65
- Greenwell BM (2017) pdp: an R package for constructing partial dependence plots. *R J* 9(1):421–436
- Guillou L, Bachar D, Audic S, Bass D, Berney C, Bittner L et al (2013) The Protist Ribosomal Reference database (PR2): a catalog of unicellular eukaryote Small Sub-Unit rRNA sequences with curated taxonomy. *Nucleic Acids Res* 41(1):D597–D604
- Hanson CA, Mueller AL, Loy A, Dona C, Appel R, Jorgensen BB, Hubert CRJ (2019) Historical factors associated with past environments influence the biogeography of thermophilic endospores in Arctic marine sediments. *Front Microbiol* 10:5
- Holdenrieder O, Pautasso M, Weisberg PJ, Lonsdale D (2004) Tree diseases and landscape processes: the challenge of landscape pathology. *Trends Ecol Evol* 19(8):446–452
- Hämäläinen S, Fey K, Selonen V (2019) The effect of landscape structure on dispersal distances of the Eurasian red squirrel. *Ecol Evol* 9(3):1173–1181
- Jackson RB, Lajtha K, Crow SE, Hugelius G, Kramer MG, and Pineiro G. (2017) The ecology of soil carbon: pools, vulnerabilities, and biotic and abiotic controls. In: Futuyma D (ed), *Annual review of ecology, evolution, and systematics*, Vol. 48 volume 48 of annual review of ecology evolution and systematics. pp 419–445. San Mateo
- Jassey VEJ, Walcker R, Kardol P, Geisen S, Heger T, Lamontowicz M et al (2022) Contribution of soil algae to the global carbon cycle. *New Phytol* 234(1):64–76
- Jones JA, Hutchinson R, Moldenke A, Pfeiffer V, Helderop E, Thomas E et al (2019) Landscape patterns and diversity of meadow plants and flower-visitors in a mountain landscape. *Landscape Ecol* 34(5):997–1014
- Karger DN, Conrad O, Boehner J, Kawohl T, Krefl H, Soria-Auza RW et al (2017) Data descriptor: climatologies at high resolution for the earth's land surface areas. *Scientific Data* 4:56
- Kibblewhite MG, Ritz K, Swift MJ (2008) Soil health in agricultural systems. *PhilosTrans R Soc B* 363(1492):685–701
- Kuhn M (2020) caret: classification and regression training. URL <https://CRAN.R-project.org/package=caret>. R package version 6.0-86.
- Laine AL, Hanski I (2006) Large-scale spatial dynamics of a specialist plant pathogen in a fragmented landscape. *J Ecol* 94(1):217–226
- Larkin MA, Blackshields G, Brown NP, Chenna R, McGettigan PA, McWilliam H et al (2007) Clustal W and Clustal X version 20. *Bioinformatics* 23(21):2947–2948
- Leibold MA, Holyoak M, Mouquet N, Amarasekare P, Chase JM, Hoopes MF et al (2004) The metacommunity concept: a framework for multi-scale community ecology. *Ecol Lett* 7(7):601–613
- Lentendu G, Mahé F, Bass D, Rueckert S, Stoeck T, Dunthorn M (2018) Consistent patterns of high alpha and low beta diversity in tropical parasitic and free-living protists. *Mol Ecol* 27(13):2846–2857
- Locey KJ, Lennon JT (2016) Scaling laws predict global microbial diversity. *Proc Natl Acad Sci USA* 113(21):5970–5975
- Logue JB, Mouquet N, Peter H, Hillebrand H, Grp MW (2011) Empirical approaches to metacommunities: a review and comparison with theory. *Trends Ecol Evol* 26(9):482–491
- Louca S (2021) The rates of global bacterial and archaeal dispersal. *ISME J* 16:159–167
- Louca S, Polz MF, Mazel F, Albright MBN, Huber JA, O'Connor MI et al (2018) Function and functional redundancy in microbial systems. *Nat Ecol Evol* 2(6):936–943

- Mace GM, Barrett M, Burgess ND, Cornell SE, Freeman R, Grooten M, Purvis A (2018) Aiming higher to bend the curve of biodiversity loss. *Nat Sustain* 1(9):448–451
- Macingo SC, Kormas KA, Oikonomou A, Karayanni H (2019) Taxa-area and distance-decay relationships of unicellular eukaryotes along an elevation gradient of mountainous freshwater ecosystems. *J Plankton Res* 41(6):821–834
- Magoc T, Salzberg SL (2011) FLASH: fast length adjustment of short reads to improve genome assemblies. *Bioinformatics* 27(21):2957–2963
- Mahé F, Czech L, Stamatakis A, Quince C, de Vargas C, Dunthorn M, Rognes T (2022) Swarm v3: towards tera-scale amplicon clustering. *Bioinformatics* 38(1):267–269
- Malard LA, Mod HK, Guex N, Broennimann O, Yashiro E, Lara E et al (2022) Comparative analysis of diversity and environmental niches of soil bacterial, archaeal, fungal and protist communities reveal niche divergences along environmental gradients in the Alps. *Soil Biol Biochem* 169:89
- Malinowski R, Lewinski S, Rybicki M, Gromny E, Jenerowicz M, Krupinski M et al (2020) Automated production of a land cover/use map of Europe based on Sentinel-2 imagery. *Remote Sens* 12:21
- Martin EA, Dainese M, Clough Y, Baldi A, Bommarco R, Gagic V et al (2019) The interplay of landscape composition and configuration: new pathways to manage functional biodiversity and agroecosystem services across Europe. *Ecol Lett* 22(7):1083–1094
- Martiny JBH, Bohannan BJM, Brown JH, Colwell RK, Fuhrman JA, Green JL et al (2006) Microbial biogeography: putting microorganisms on the map. *Nat Rev Microbiol* 4(2):102–112
- Mennicken S, Kondratow F, Buralli F, Manzi S, Andrieu E, Roy M, Brin A (2020) Effects of past and present-day landscape structure on forest soil microorganisms. *Front Ecol Evol* 8:25
- Mod HK, Scherrer D, Di Cola V, Broennimann O, Blandenier Q, Breiner FT et al (2020) Greater topoclimatic control of above-versus below-ground communities. *Glob Change Biol* 26(12):6715–6728
- Mod HK, Buri A, Yashiro E, Guex N, Malard L, Pinto-Figueroa E et al (2021) Predicting spatial patterns of soil bacteria under current and future environmental conditions. *ISME J* 15(9):2547–2560
- Molnar T, Magura T, Tothmeresz B, Elek Z (2001) Ground beetles (Carabidae) and edge effect in oak-hornbeam forest and grassland transects. *Eur J Soil Biol* 37(4):297–300
- Mony C, Vandenkoornhuysen P, Bohannan BJM, Peay K, Leibold MA (2020) A landscape of opportunities for microbial ecology research. *Front Microbiol* 11:58
- Mony C, Bohannan BJM, Leibold MA, Peay K, Vandenkoornhuysen P (2021) Editorial: microbial landscape ecology: highlights on the invisible corridors. *Front Ecol Evol* 9:898
- Mony C, Uroy L, Khalfallah F, Haddad N, Vandenkoornhuysen P (2022) Landscape connectivity for the invisibles. *Ecography* 2022(8):89
- Mouquet N, Loreau M (2003) Community patterns in source-sink metacommunities. *Am Nat* 162(5):544–557
- Nosheen S, Ajmal I, and Song Y. (2021). Microbes as biofertilizers, a potential approach for sustainable crop production. *Sustainability* 13(4):42
- Oksanen J, Simpson GL, Blanchet FG, Kindt R, Legendre P, Minchin PR, et al. (2022) *vegan: Community Ecology Package*. URL <https://CRAN.R-project.org/package=vegan>. R package version 2.6-2.
- Paz C, Opik M, Bulascoschi L, Bueno CG, Galetti M (2021) Dispersal of arbuscular mycorrhizal Fungi: evidence and insights for ecological studies. *Microb Ecol* 81(2):283–292
- Pearson WR (2000) Flexible sequence similarity searching with the FASTA3 program package. In: Misener S, Krawetz S (eds) *Bioinformatics methods and protocols*. Humana Press, New York, pp 185–218
- Pellissier L, Anzini M, Maiorano L, Dubuis A, Pottier J, Vittoz P, Guisan A (2013) Spatial predictions of land-use transitions and associated threats to biodiversity: the case of forest regrowth in mountain grasslands. *Appl Veg Sci* 16(2):227–236
- Pradervand JN, Dubuis A, Pellissier L, Guisan A, Randin C (2014) Very high resolution environmental predictors in species distribution models: moving beyond topography? *Progress Phys Geogr-Earth Environ* 38(1):79–96
- Prevedello JA, Vieira MV (2010) Does the type of matrix matter? A quantitative review of the evidence. *Biodivers Conserv* 19(5):1205–1223
- Pruesse E, Quast C, Knittel K, Fuchs BM, Ludwig W, Peplies J, Gloeckner FO (2007) SILVA: a comprehensive online resource for quality checked and aligned ribosomal RNA sequence data compatible with ARB. *Nucleic Acids Res* 35(21):7188–7196
- Reed DH (2004) Extinction risk in fragmented habitats. *Anim Conserv* 7(2):181–191
- Riitters K (2019) Pattern metrics for a transdisciplinary landscape ecology. *Landsc Ecol* 34(9):2057–2063
- Rognes T, Flouri T, Nichols B, Quince C, Mahé F (2016) VSEARCH: a versatile open source tool for metagenomics. *PeerJ* 4:e2584
- Sagova-Mareckova M, Boenigk J, Bouchez A, Cermakova K, Chonova T, Cordier T et al (2021) Expanding ecological assessment by integrating microorganisms into routine freshwater biomonitoring. *Water Res* 191:25
- Sala OE, Chapin FS, Armesto JJ, Berlow E, Bloomfield J, Dirzo R et al (2000) Biodiversity - global biodiversity scenarios for the year 2100. *Science* 287(5459):1770–1774
- Saleem M, Hu J, and Jousset A. (2019) More than the sum of its parts: microbiome biodiversity as a driver of plant growth and soil health. In Futuyama D (ed), *Annual review of ecology, evolution, and systematics*, Vol 50 volume 50 of annual review of ecology evolution and systematics. pp 145.
- Schwalbach MS, Fuhrman JA (2005) Wide-ranging abundances of aerobic anoxygenic phototrophic bacteria in the world ocean revealed by epifluorescence microscopy and quantitative PCR. *Limnol Oceanogr* 50(2):620–628
- Schwob G, Segovia IN, Gonzalez-Wevar C, Cabrol L, Orlando J, Poulin E (2021) Exploring the microdiversity within marine bacterial taxa: toward an integrated biogeography in the southern ocean. *Front Microbiol* 12:8

- Sepey CVW, Singer D, Dumack K, Fournier B, Belbahri L, Mitchell EAD, Lara E (2017) Distribution patterns of soil microbial eukaryotes suggests widespread alginivory by phagotrophic protists as an alternative pathway for nutrient cycling. *Soil Biol Biochem* 112:68–76
- Sepey CVW, Broennimann O, Buri A, Yashiro E, Pinto-Figueroa E, Singer D et al (2020) Soil protist diversity in the Swiss western Alps is better predicted by topo-climatic than by edaphic variables. *J Biogeogr* 47(4):866–878
- Shakoor A, Ashraf F, Shakoor S, Mustafa A, Rehman A, Altaf MM (2020) Biogeochemical transformation of greenhouse gas emissions from terrestrial to atmospheric environment and potential feedback to climate forcing. *Environ Sci Pollut Res* 27(31):38513–38536
- Sofi JA, Lone AH, Ganie MA, Dar NA, Bhat SA, Mukhtar M et al (2016) Soil microbiological activity and carbon dynamics in the current climate change scenarios: a review. *Pedosphere* 26(5):577–591
- Spiegelberger T, Matthies D, Mueller-Schaerer H, Schaffner U (2006) Scale-dependent effects of land use on plant species richness of mountain grassland in the European Alps. *Ecography* 29(4):541–548
- Stoeck T, Bass D, Nebel M, Christen R, Jones MDM, Breiner H, Richards TA (2010) Multiple marker parallel tag environmental DNA sequencing reveals a highly complex eukaryotic community in marine anoxic water. *Mol Ecol* 19(s1):21–31
- Tilman D, Balzer C, Hill J, Befort BL (2011) Global food demand and the sustainable intensification of agriculture. *Proc Natl Acad Sci USA* 108(50):20260–20264
- Urban MC (2006) Maladaptation and mass effects in a meta-community: Consequences for species coexistence. *Am Nat* 168(1):28–40
- Vannier C, Lefebvre J, Longaretti PY, Lavorel S (2016) Patterns of landscape change in a rapidly urbanizing mountain region. *Cybergeo* 15:89
- Wagg C, Bender SF, Widmer F, van der Heijden MGA (2014) Soil biodiversity and soil community composition determine ecosystem multifunctionality. *Proc Natl Acad Sci USA* 111(14):5266–5270
- Wilkinson DM, Mitchell EAD (2010) Testate amoebae and nutrient cycling with particular reference to soils. *Geomicrobiol J* 27(6–7):520–533
- Wilkinson DM, Koumoutsaris S, Mitchell EAD, Bey I (2012) Modelling the effect of size on the aerial dispersal of microorganisms. *J Biogeogr* 39(1):89–97
- Xiong W, Jousset A, Guo S, Karlsson I, Zhao Q, Wu H et al (2018) Soil protist communities form a dynamic hub in the soil microbiome. *ISME J* 12(2):634–638
- Yashiro E, Pinto-Figueroa E, Buri A, Spangenberg JE, Adatte T, Niculita-Hirzel H et al (2016) Local environmental factors drive divergent grassland soil bacterial communities in the western Swiss Alps. *Appl Environ Microbiol* 82(21):6303–6316
- Yashiro E, Pinto-Figueroa E, Buri A, Spangenberg JE, Adatte T, Niculita-Hirzel H et al (2018) Meta-scale mountain grassland observatories uncover commonalities as well as specific interactions among plant and non-rhizosphere soil bacterial communities. *Sci Rep* 8:41

Publisher's Note Springer Nature remains neutral with regard to jurisdictional claims in published maps and institutional affiliations.